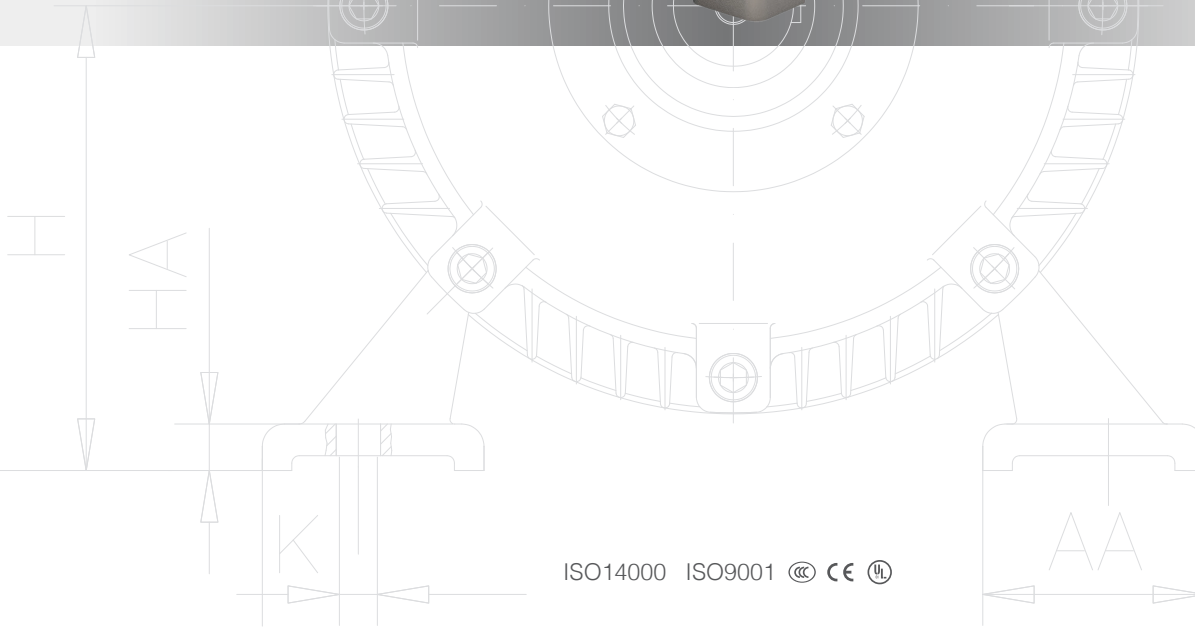
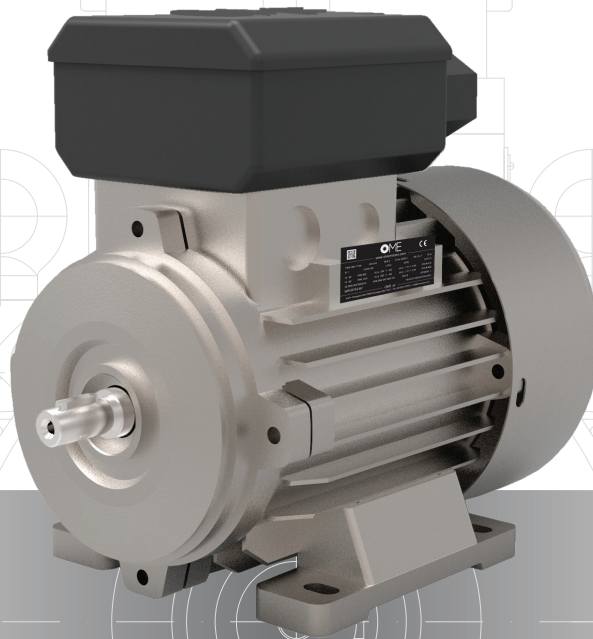




OMM2 SERIES
SINGLE PHASE ELECTRIC MOTOR

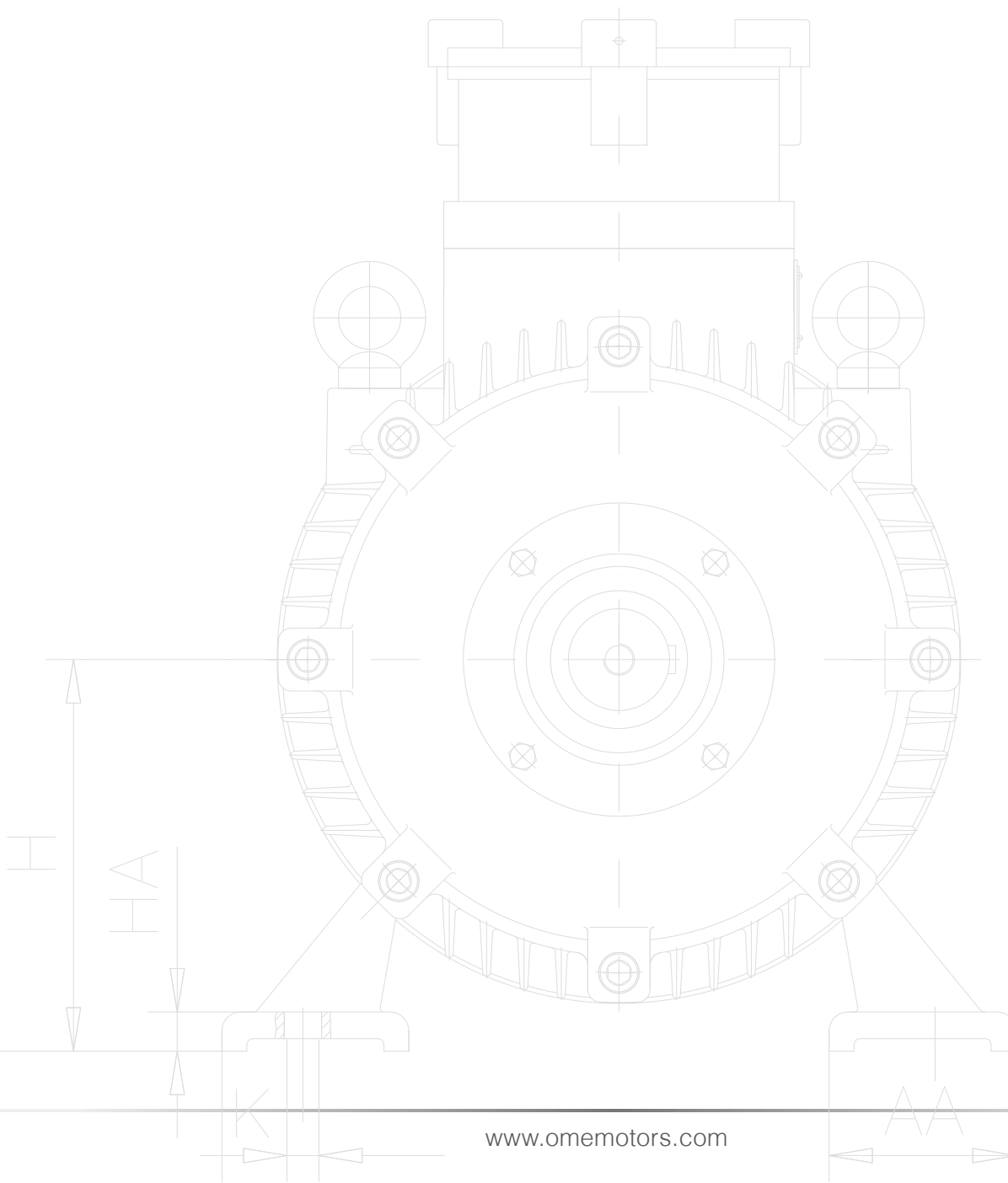
www.omemotors.com





GENERAL INFORMATION

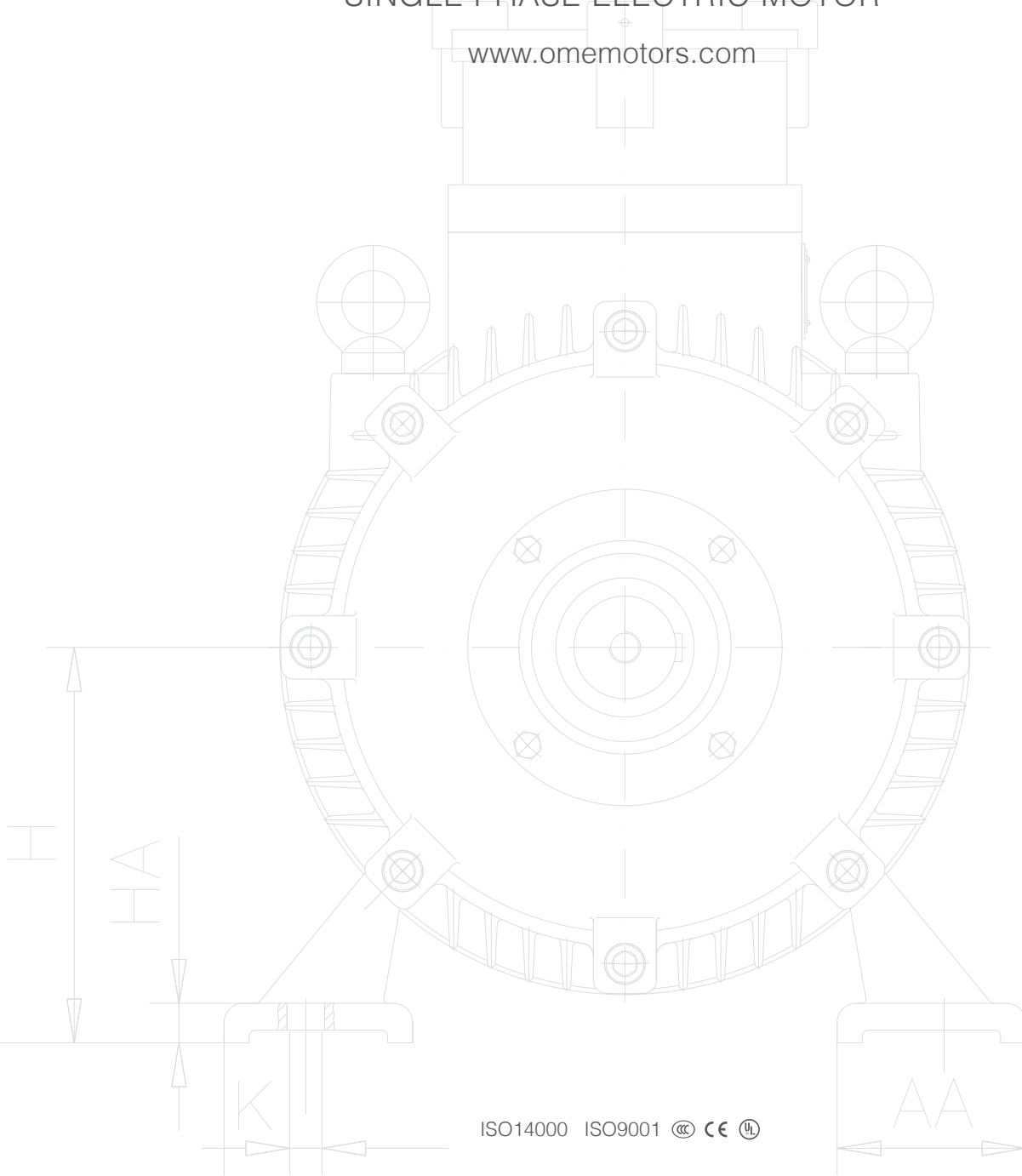
| | |
|---------------------------------------|----|
| OME Electric Motors Information | 01 |
| OMM2 Single Phase Series Introduction | 04 |
| Technical Data | 05 |
| Overall Dimension | 06 |





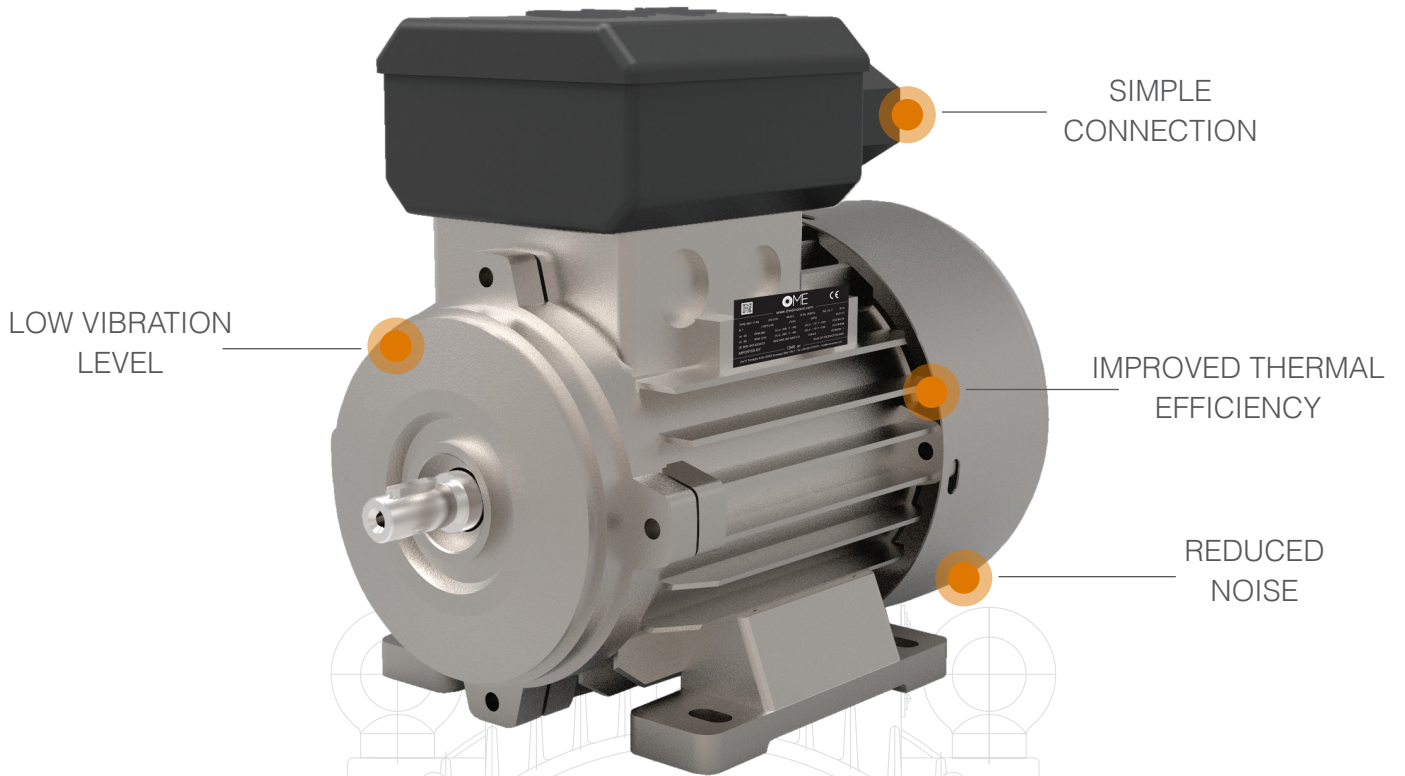
OMM2 SERIES
SINGLE PHASE ELECTRIC MOTOR

www.omemotors.com





OMM2 SERIES SINGLE PHASE ELECTRIC MOTOR



High Performance • Energy Saving

- Single phase motors designed and manufactured by OME are motors that offer high efficiency and at the same time effective energy savings, in line with environmental regulations.

- OME high efficiency motors ensure significant optimisation of energy consumption, safeguarding the environment and ensuring substantial savings in operating costs.

OME Electric Motors

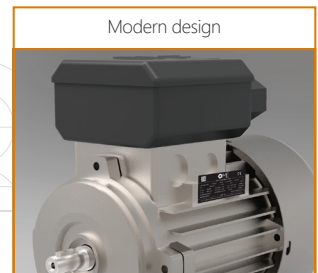
OME Single Phase motors are suitable for all industrial sectors and applications, complying with national and international mandatory efficiency rules.

OME's motors help our customers increase their productivity, save energy, improve quality and generate power.

- High quality components including superior copper, metal cable glands and SKF bearings. Thanks to their high quality, OME electric motors are perfectly suitable for heavy duty applications, with Long lasting performances.



- OME also pays exceptional care and to the design attention of its electric motors. This increase the cooling efficiency and also the looking of the product.



- Customized packaging that provides increased protection during transport and an easier handling.



OME Electric Motors and Orsatti Group

OME is a well-established global reality born from the Orsatti family's long experience in the electrical machinery sector and characterized by a history in continuous evolution.

The key points that distinguish the Orsatti Group are in particular:

- Technical experience of over 50 years
- The continuous research for new solutions to increase the performance of our electric motors
- Development of technical solutions in compliance with current standards
- The tailor-made service to customize the motors on customer request
- The wide range of production to meet any market need
- The constant research for suitable solutions to increase the efficiency of our electric motors
- Compliance with the standards required for energy saving and environmental protection

MISSION

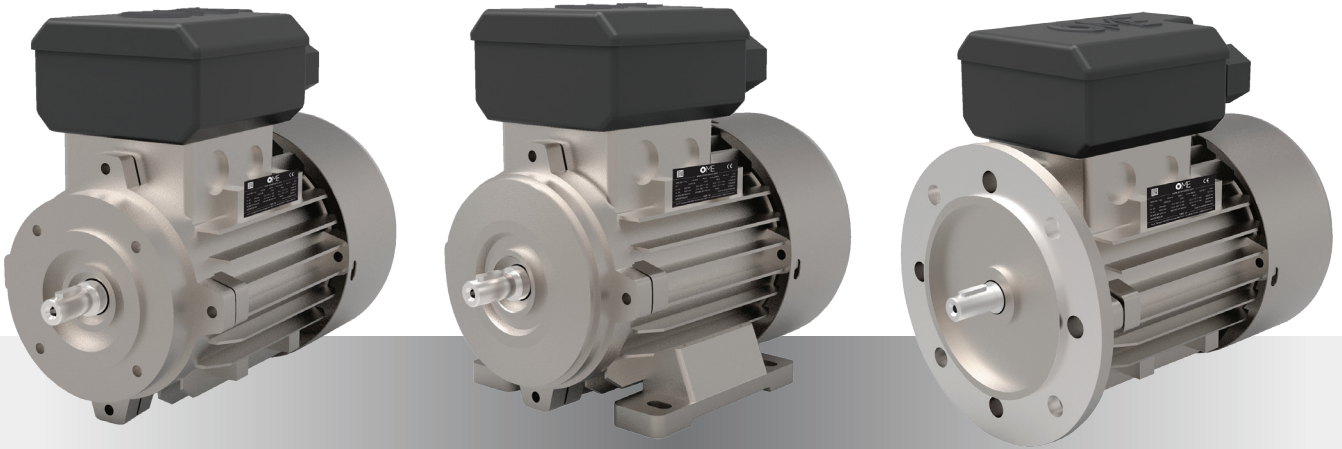
Our mission is to be a leading company in the production of electric motors at an international level.

VISION

Our vision is to design and manufacture highly customized motors, meeting the most varied customer requirements, managing to make competitive even the smallest realities.

VALUES

- The high quality of production, sales, service and maintenance;
- Intelligent and low costs logistics;
- Providing motors, services and expertise to save energy and improve customer processes throughout the life cycle of our products and beyond.



Series OMM2

SINGLE PHASE ELECTRIC MOTOR

Introduction:

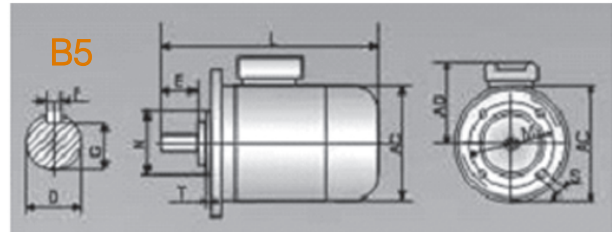
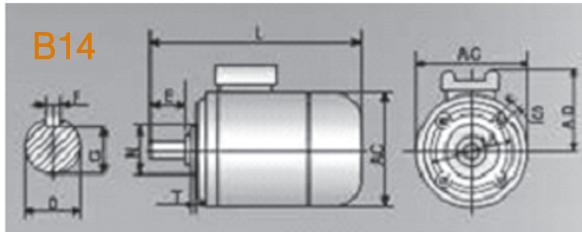
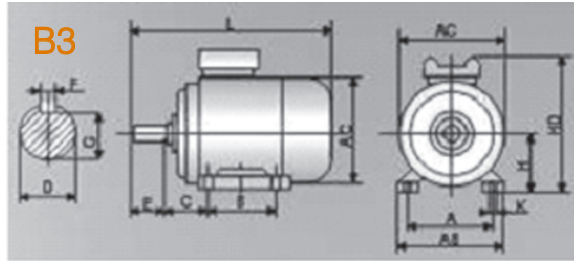
OMM2 series aluminum housing single-phase two value capacitor asynchronous motors with the national latest design are made in high quality materials and meet the relative standards of IEC. OMM2 series motors have following features: good performance, safe and reliable operation, nice appearance, convenient maintenance, low noise, slight vibration, light weight and simple structure.

This series of motors with two capacitors can be used on air compressor, pumps, refrigeration, medical apparatus and instruments, and many other small size machines.



OMM2 SERIES TECHNICAL DATA (V.220 HZ.50)

| Model ▼ | Output | | Current (A) | Power Factor | Eff (%) | Speed | Tstart /T n | Ist/In | Tmax /Tn |
|-------------|--------|------|----------------|-----------------|---------|-------|-------------|--------|----------|
| | KW | HP | | | | | | | |
| OMM2 71A2 | 0.37 | 0.5 | 2.60 | 0.95 | 68 | 2760 | 2.2 | 6.5 | 1.7 |
| OMM2 71B2 | 0.55 | 0.75 | 3.71 | 0.95 | 71 | 2760 | 2.2 | 6.5 | 1.7 |
| OMM2 80A2 | 0.75 | 1 | 4.92 | 0.95 | 73 | 2780 | 2.2 | 6.5 | 1.7 |
| OMM2 80B2 | 1.1 | 1.5 | 7.02 | 0.95 | 75 | 2780 | 2.2 | 6.5 | 1.7 |
| OMM2 90S2 | 1.5 | 2 | 9.32 | 0.95 | 77 | 2800 | 2.2 | 6.5 | 1.7 |
| OMM2 90L2 | 2.2 | 3 | 13.5 | 0.95 | 78 | 2800 | 2.2 | 6.5 | 1.7 |
| OMM2 100L2 | 3 | 4 | 18.2 | 0.95 | 79 | 2820 | 2.0 | 7.0 | 1.7 |
| OMM2 112M2 | 3.7 | 5 | 22.1 | 0.95 | 80 | 2820 | 2.0 | 7.0 | 1.7 |
| OMM2 71A4 | 0.25 | 0.33 | 1.90 | 0.95 | 63 | 1360 | 2.2 | 6.5 | 1.7 |
| OMM2 71B4 | 0.37 | 0.5 | 2.64 | 0.95 | 67 | 1360 | 2.2 | 6.5 | 1.7 |
| OMM2 80A4 | 0.55 | 0.75 | 3.76 | 0.95 | 70 | 1380 | 2.2 | 6.5 | 1.7 |
| OMM2 80B4 | 0.75 | 1 | 4.98 | 0.95 | 72 | 1380 | 2.2 | 6.5 | 1.7 |
| OMM2 90S4 | 1.1 | 1.5 | 7.11 | 0.95 | 74 | 1400 | 2.2 | 6.5 | 1.7 |
| OMM2 90L4 | 1.5 | 2 | 9.44 | 0.95 | 76 | 1400 | 2.2 | 6.5 | 1.7 |
| OMM2 100LA4 | 2.2 | 3 | 13.7 | 0.95 | 77 | 1410 | 2.0 | 7.0 | 1.7 |
| OMM2 100LB4 | 3 | 4 | 18.4 | 0.95 | 78 | 1420 | 2.0 | 7.0 | 1.7 |
| OMM2 112M4 | 3.7 | 5 | 22.4 | 0.95 | 79 | 1420 | 2.0 | 7.0 | 1.7 |

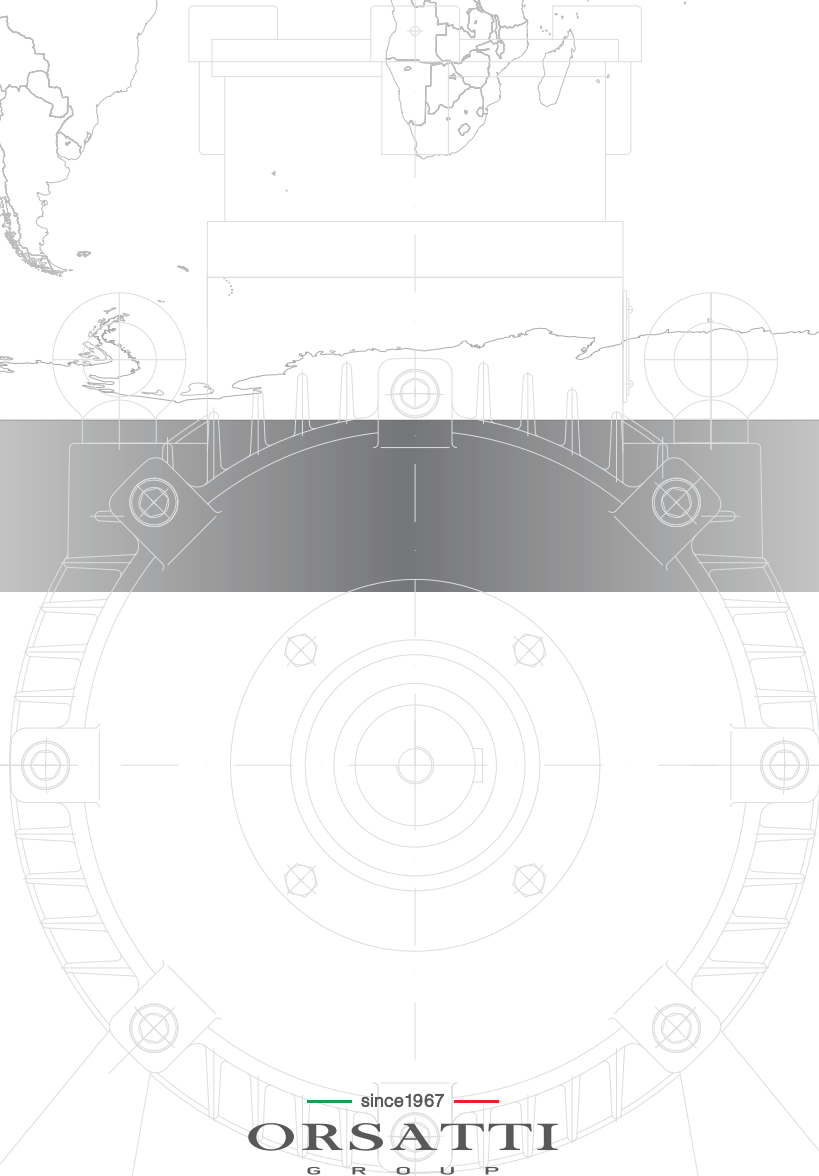
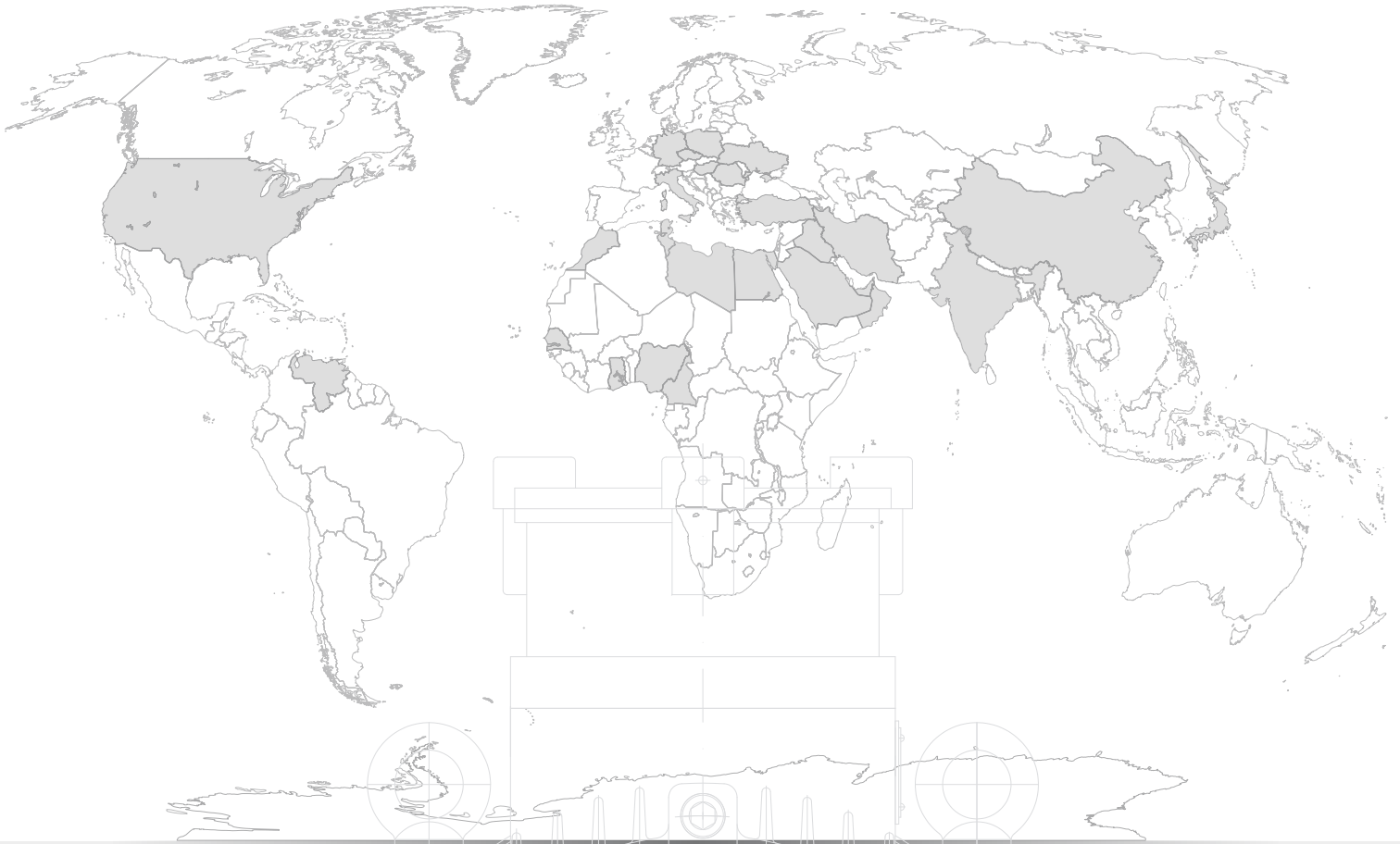


OVERALL AND MOUNTING DIMENSION

| Frame Size | Installation Size (mm) | | | | | | | | | | Installation Size For B5 | | | | Installation Size For B14 | | | | | Overall Dimension (mm) | | | | |
|------------|------------------------|-----|----|----|----|---|------|-----|----|-----|--------------------------|-----|----|-----|---------------------------|-----|-----|----|-----|------------------------|-----|-----|-----|-----|
| | A | B | C | D | E | F | G | H | K | M | N | P | S | T | M | N | P | S | T | AB | AC | AD | HD | L |
| 71 | 112 | 90 | 45 | 14 | 30 | 5 | 11 | 71 | 7 | 130 | 110 | 160 | 10 | 3.5 | 85 | 70 | 105 | M6 | 2.5 | 135 | 140 | 107 | 178 | 246 |
| 80 | 125 | 100 | 50 | 19 | 40 | 6 | 15.5 | 80 | 10 | 165 | 130 | 200 | 12 | 3.5 | 100 | 80 | 120 | M6 | 3 | 155 | 160 | 141 | 221 | 299 |
| 90S | 140 | 100 | 56 | 24 | 50 | 8 | 20 | 90 | 10 | 165 | 130 | 200 | 12 | 3.5 | 115 | 95 | 140 | M8 | 3 | 175 | 175 | 160 | 250 | 328 |
| 90 L | 140 | 125 | 56 | 24 | 50 | 8 | 20 | 90 | 10 | 165 | 130 | 200 | 12 | 3.5 | 115 | 95 | 140 | M8 | 3 | 175 | 175 | 160 | 250 | 358 |
| 100L | 160 | 140 | 63 | 28 | 60 | 8 | 24 | 100 | 12 | 215 | 180 | 250 | 15 | 4 | 130 | 110 | 160 | M8 | 3.5 | 200 | 195 | 160 | 260 | 412 |
| 112M | 190 | 140 | 70 | 28 | 60 | 8 | 24 | 112 | 12 | 215 | 180 | 250 | 15 | 4 | 130 | 110 | 160 | M8 | 3.5 | 226 | 220 | 166 | 278 | 421 |

CATALOGUE

OMM2 Single Phase Series Motor



since 1967

ORSATTI
GROUP

OME Electric Motors srl

Sede - Via N. Tartaglia N.6b 25064 Gussago (Bs) Italy - Cod.Fisc. e Partita IVA: 03276210980 - Tel. +39 030 3737072 - Fax. +39 030 2411395 - info@omemotors.com

www.omemotors.com